

SPECIFICATION SHEET

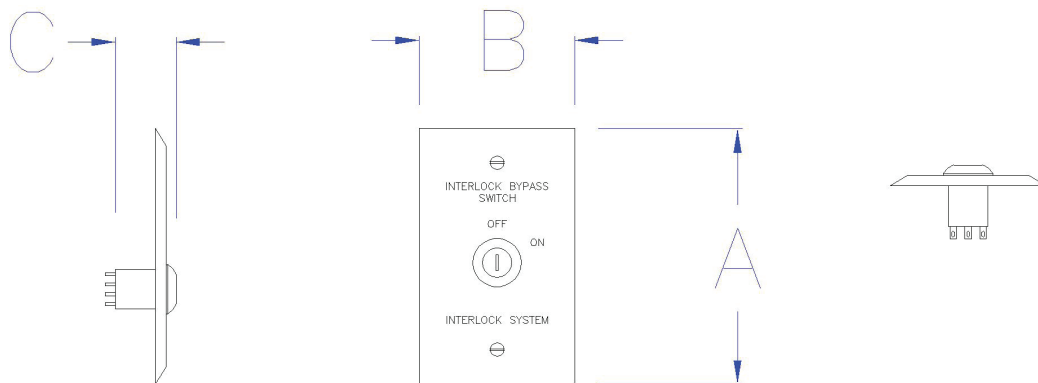
AREA WARNING DEVICE

PN: ETG-BPS



Entry-Guard™ curtain bypass key switch. External key switch for applications that require a curtain door interlock to be bypassed to allow use of an entire room. Wire in parallel across interlock terminals then select interlock status by turning the key on or off.

- Bypass any safety interlock to accommodate room consolidation, or test mode.
- Single gang outlet mounting compatible.
- Custom labeling available for entryway doors, enclosure doors or access panels interlocks.



Outside Dimensions	A = Height: 4.50" [114.3mm] B = Width: 2.75" [69.8mm] C = Depth: 2.75" [69.8mm]
Mounting Pattern	Single gang outlet box compatible
Rated Voltage	125 VAC / 20 VDC (recommended 5 to 28 VDC)
Rated Current	4 amps AC/DC (recommended < 0.5 amps)
Connection	(2) Solder terminals for use with 20-24 gauge wire
Weight	0.25 lbs [0.11 kgs]

