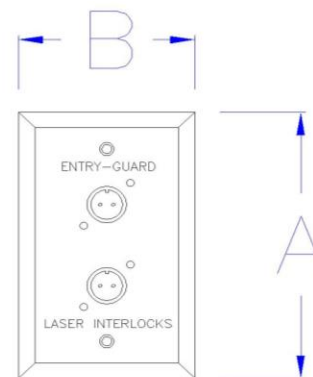
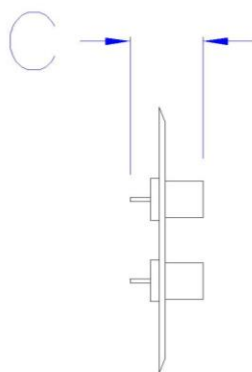


ENTRY-GUARD™ (P/N: ETG-X1)

Entry-Guard™ dual interlock receptacle, two Amphenol 97 series two pin connectors mounted on a single gang outlet cover. To be used with one or two ETG-X2.



- Provides external extension of two sets of output interlock terminals
- Maximum relay switching voltage 250 VAC @ 2 amps
- High grade aluminum and stainless steel components provide strength and environmental protection

| Specifications | |
|---------------------------|--|
| Outside Dimensions | A = Height: 4.50" [114.3mm] |
| | B = Width: 2.75" [69.8mm] |
| | C = Depth: 2.75" [69.8mm] |
| Mounting Pattern | Single gang outlet box compatible |
| Rated Voltage | 250 VAC |
| Rated Current | 2 amps |
| Connection | (2) Solder terminals for use with 20-24 gauge wire |
| Weight | 0.25 lbs [0.11 kgs] |