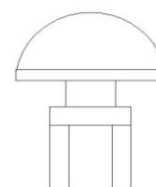
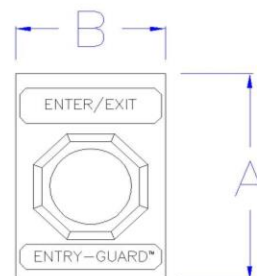
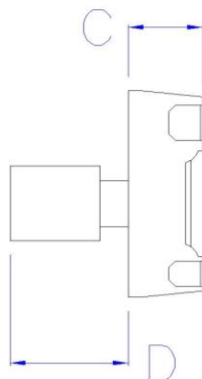


ENTRY-GUARD™ (P/N: ETG-RE-F)

Entry-Guard™ request to enter/exit switch. Blue housing with flush mounted piezo momentary push button. Features one normally open and one normally closed contact.



- Allows for temporary bypass entry or exit through a safety interlocked door
- Unique, curved design helps protect against accidental activation
- Small, light weight, impact resistant polymer housing

Specifications	
Outside Dimensions	A = Height: 4.87" [124mm]
	B = Width: 3.25" [82mm]
	C = Depth: 1.62" [41mm]
	D = Depth: 2.25" [57.1mm]
Mounting Pattern	Single gang outlet box compatible
Rated Voltage	250 VDC / 600 VAC
Rated Current	1 amp (DC) / 6 amps (AC)
Weight	1 lbs [0.45 kgs]

KENTEK CORPORATION 32 Broadway • Pittsfield, NH 03263 USA

Tel: 1 800-432-2323 Fax: 1 603-435-7441 Web: kenteklaserstore.com Email: info@kenteklaserstore.com