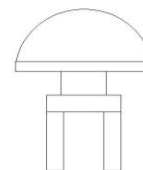
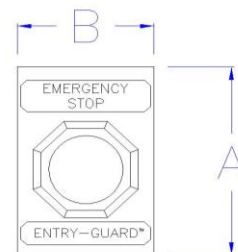
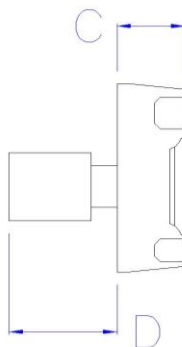


# ENTRY-GUARD™ (P/N: ETG-ES-F)

Entry-Guard™ emergency stop switch. Red housing with flush mounted red mushroom button, push to provide fail-safe, twist to reset. Features one normally closed contact and one normally open contact.



- Allows for emergency stop to create a fail-safe within a designated area
- Unique, curved design helps protect against accidental activation
- Small, light weight, impact resistant polymer housing

Specifications	
<b>Outside Dimensions</b>	A = Height: 4.87" [124mm]
	B = Width: 3.25" [82mm]
	C = Depth: 1.62" [41mm]
	D = Depth: 2.25" [57.1mm]
<b>Mounting Pattern</b>	Single gang outlet box compatible
<b>Rated Voltage</b>	250 VDC / 600 VAC
<b>Rated Current</b>	1 amp (DC) / 6 amps (AC)
<b>Weight</b>	1 lbs [0.45 kgs]